

# Optical Isolator for High Power Lasers

Our original magneto-optical glass is used in the optical isolator for high power lasers.  
We can customize sizes, wavelengths, and apertures.

## Features

### Downsizing

We can accommodate requests for the smallest size appropriate for the design and have achieved the world's smallest miniaturization for high-power fiber types.

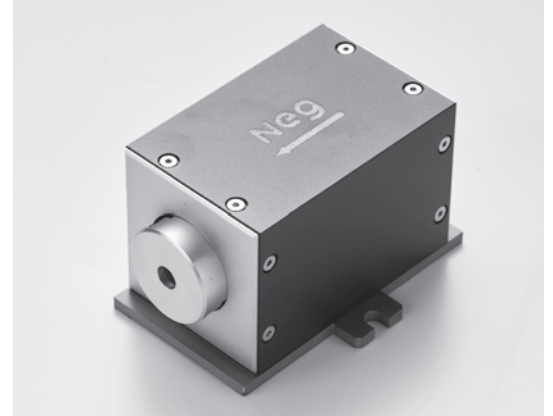
### Wavelength

We can handle a wide range of services from ultraviolet to near-infrared. Wavelengths include 465nm, 532nm, 1030nm, and 1064nm.

### Other options

Adding band pass filters and TAP ports  
Customization of aperture sizes or fiber types  
Improved isolation by connecting two units

Please contact us about other specifications.



Free-space type



Fiber type



Circulator

## Specification Examples

	Fiber type	Free-space type	
Wavelength (nm)	1030	532	1030
Size (mm)	20×20×100	23×23×40	43×55×73
Isolation (dB)	≥ 30	≥ 30	
Insertion loss (dB)	≥ 1.3	≤ 0.2	
Fiber/Connector	SM98-PM-H90D/FC-APC	—	
Aperture (mm)	—	φ 5	
Pulsed damage threshold (J/cm <sup>2</sup> , for 10ns pulse)	—	> 10	